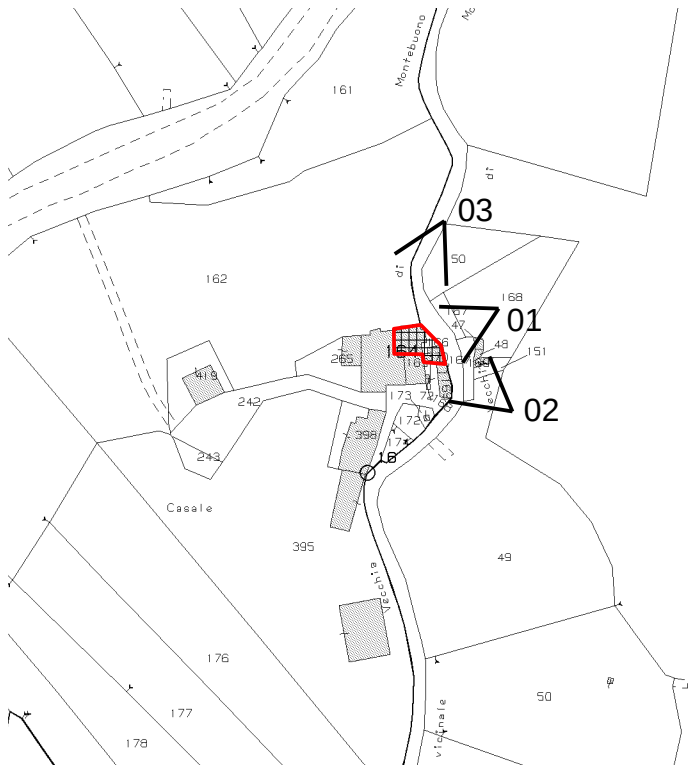


# TRIBUNALE DI TERNI

## ALLEGATO 2

### DOCUMENTAZIONE FOTOGRAFICA Procedimento n. 71/2025 R.G.E.

Beni situati nel Comune di Calvi dell'Umbria (TR)  
Vocabolo Sant'Angelo n.1  
(Catasto Fabbricati foglio 35 part. 164 sub. 3 graffata con le particelle 166 sub. 1 e part. 370)



01

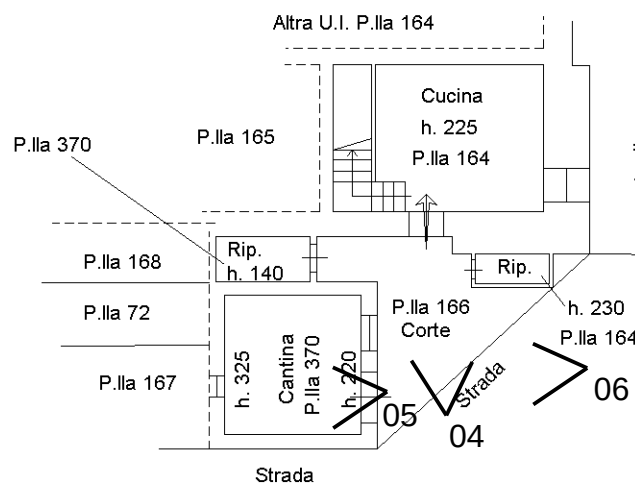


03



02





PIANTA PIANO TERRA



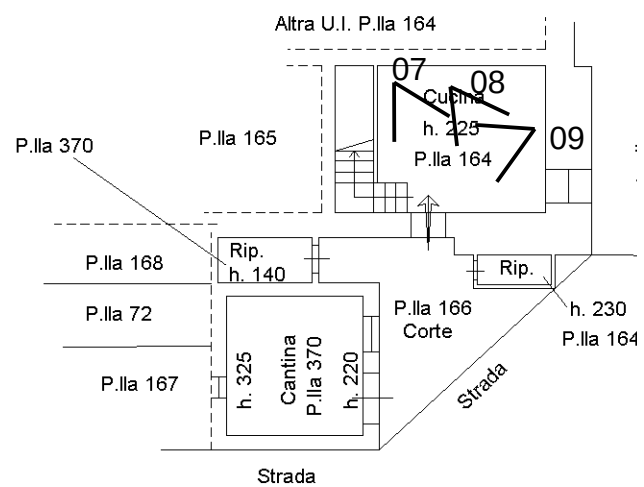
04



05



06



PIANTA PIANO TERRA



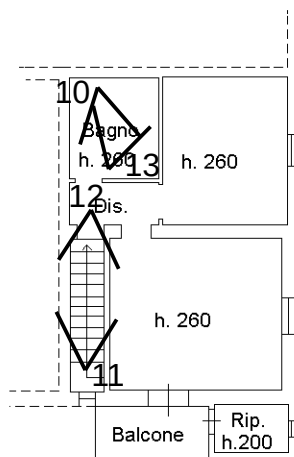
07



08



09



PIANTA PIANO PRIMO  
P.lla 164



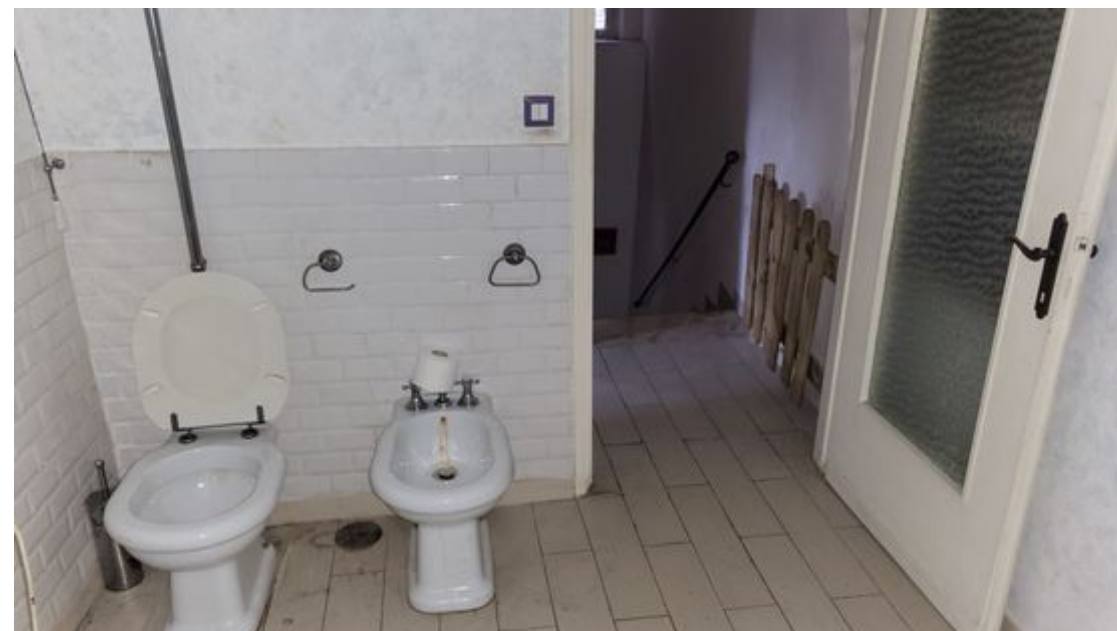
10



11

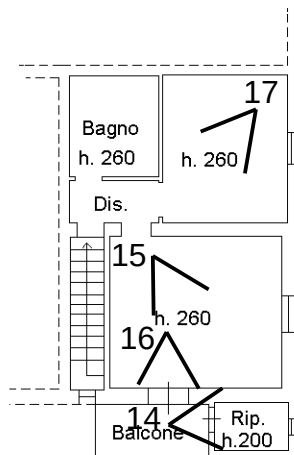


12



13





PIANTA PIANO PRIMO  
P.Ila 164



14



15



16



17