

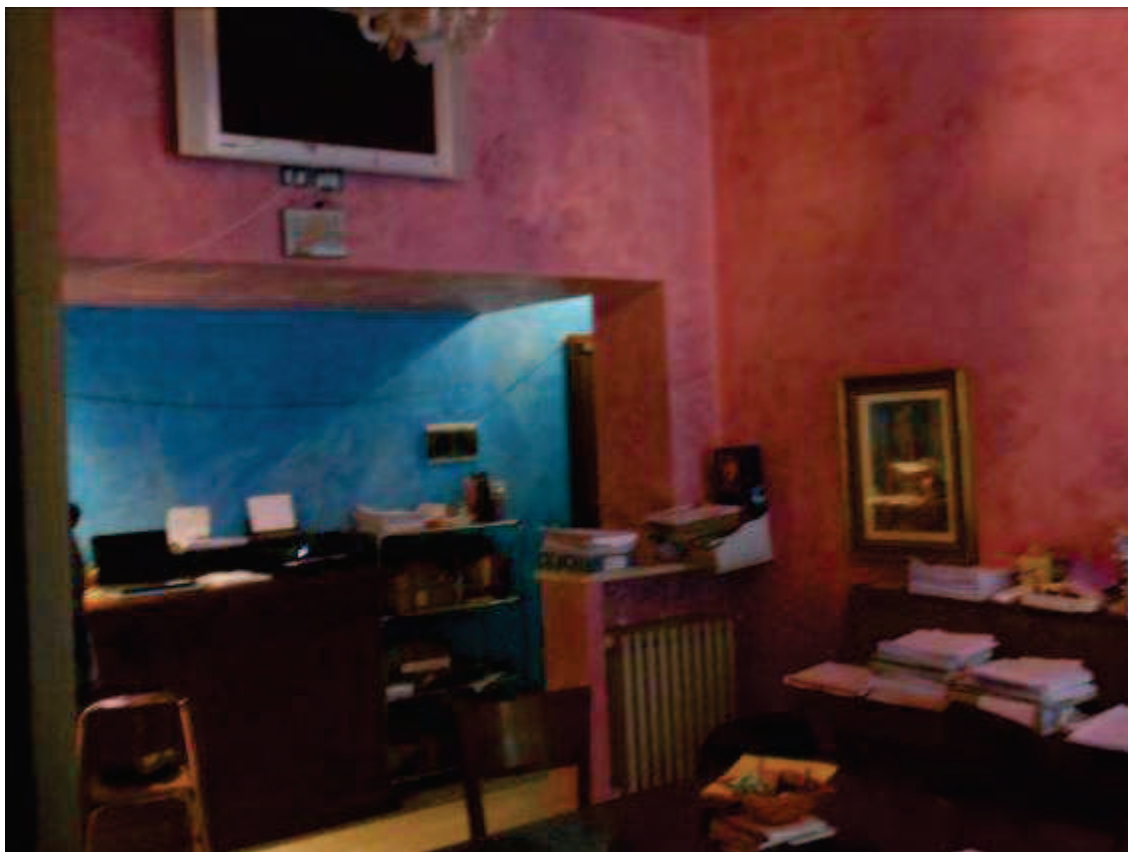


Ingresso

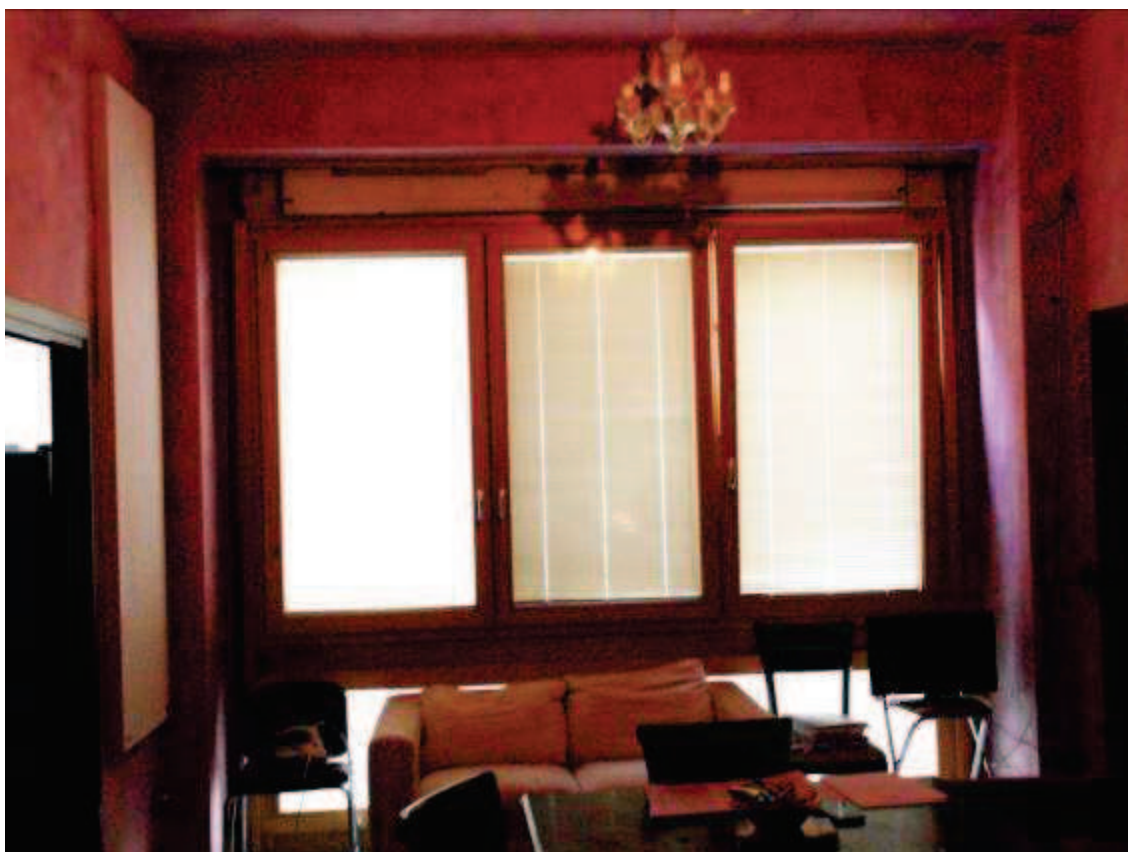


Bagno piccolo





Soggiorno







Cucina



Cucina



Antibagno





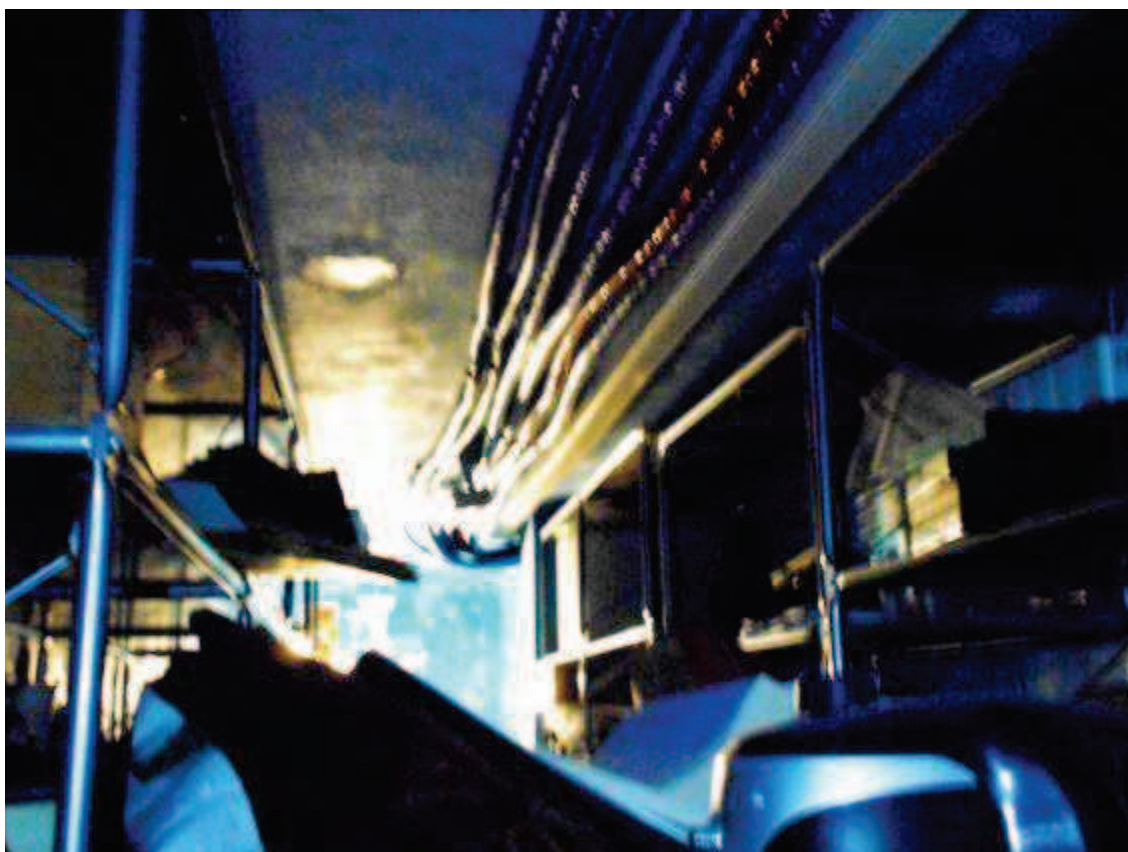


Bagno grande





Camera cieca







Camera con finestra





Cantina di pertinenza



Unità immobiliare in Milano,  
Via Paolo Da Cannobio n°10  
Fg. 437 plla 47 sub 712

This architectural floor plan represents a 210 sqm apartment. The layout includes a large central living area (Soggiorno) and a dining area (Cucina) separated by a dashed line. To the left is a large bedroom (Camera) and a storage room (Deposito). To the right, there are two more bedrooms (H 229 and H 230) and a bathroom (Bagno). A central hallway (H 179) provides access to the kitchen and the right-side bedrooms. A disheveled area (Disimp.) is located at the top right. The plan also shows various windows, doors, and structural elements like columns and walls. Dimensions for each room and the overall apartment size are provided.

Room	Area (sqm)
Deposito	171
Camera	171
Soggiorno	229
Cucina	179
H 229 (Bedroom)	229
H 230 (Bedroom)	230
H 179 (Hallway)	179
Disimp.	78
Bagno (Bathroom)	229
Bagno (Bathroom)	230
<b>Total</b>	<b>210</b>



Cantina individuata e aperta dal  
comodatario occupante non corrispondente  
alla documentazione catastale e alla  
descrizione dei confini riportata in atto di  
provenienza