

# DOCUMENTAZIONE FOTOGRAFICA

*Via Giuseppe MAZZINI, 20*

**MILANO**

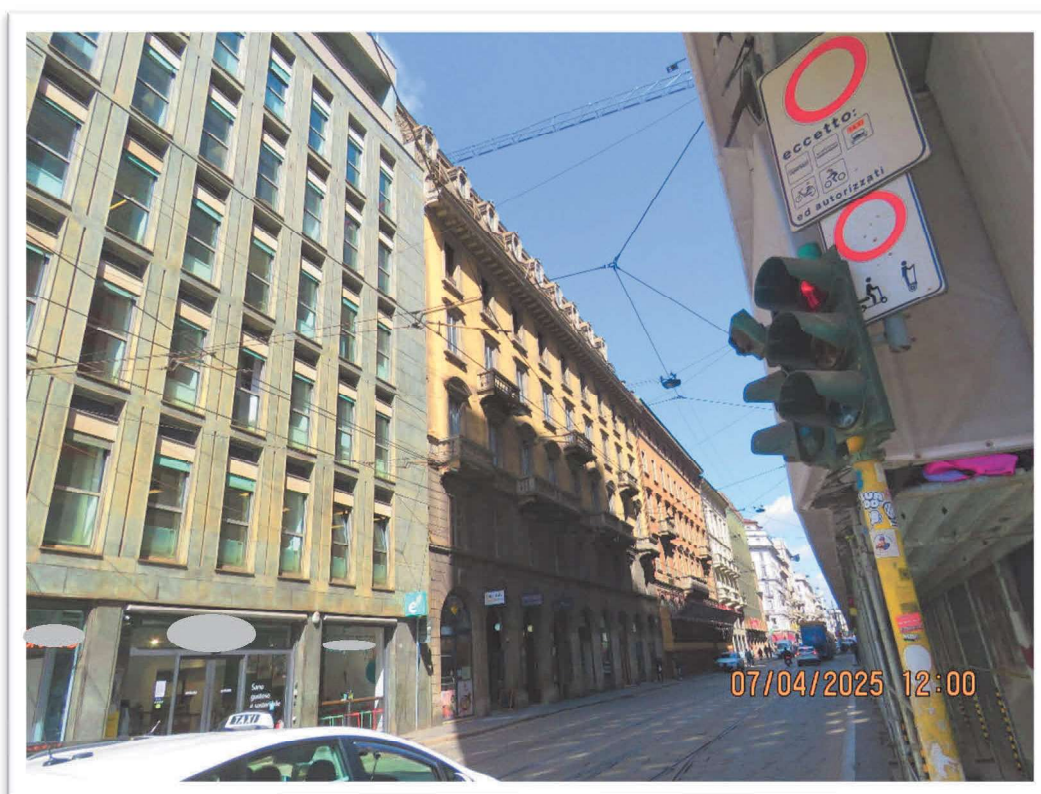


Vista del palazzo condominiale da via Mazzini e particolare dell'ingresso alla galleria.

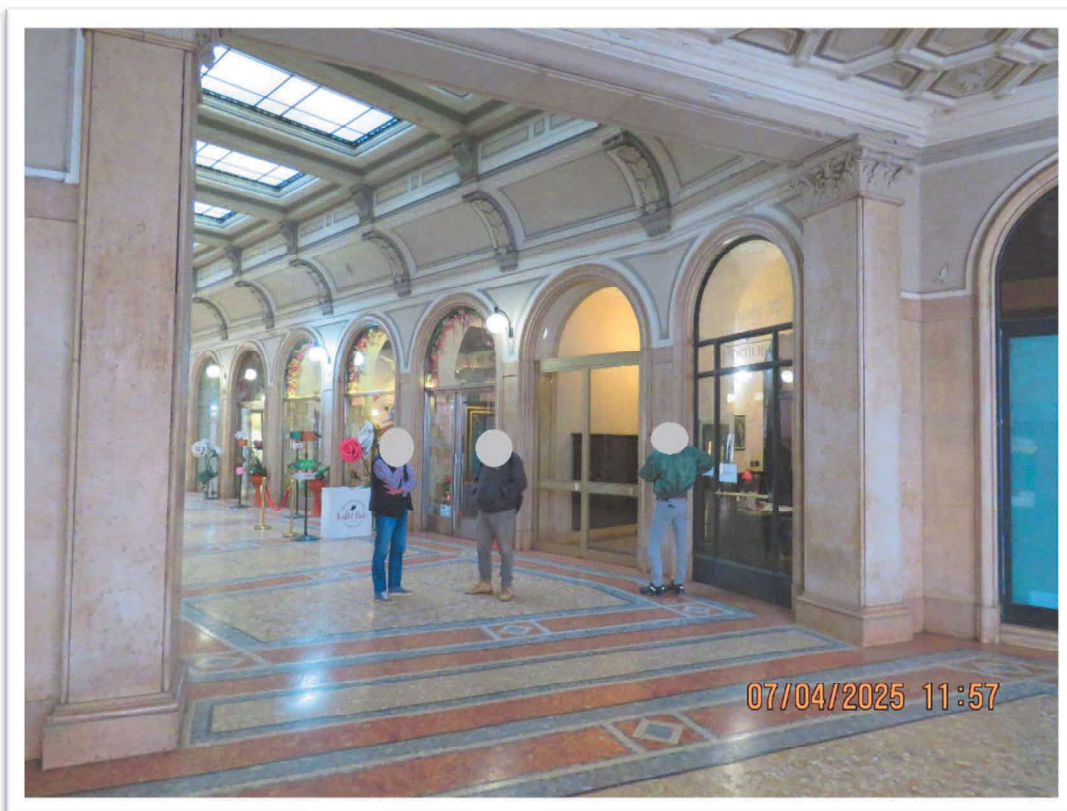




L'intorno.

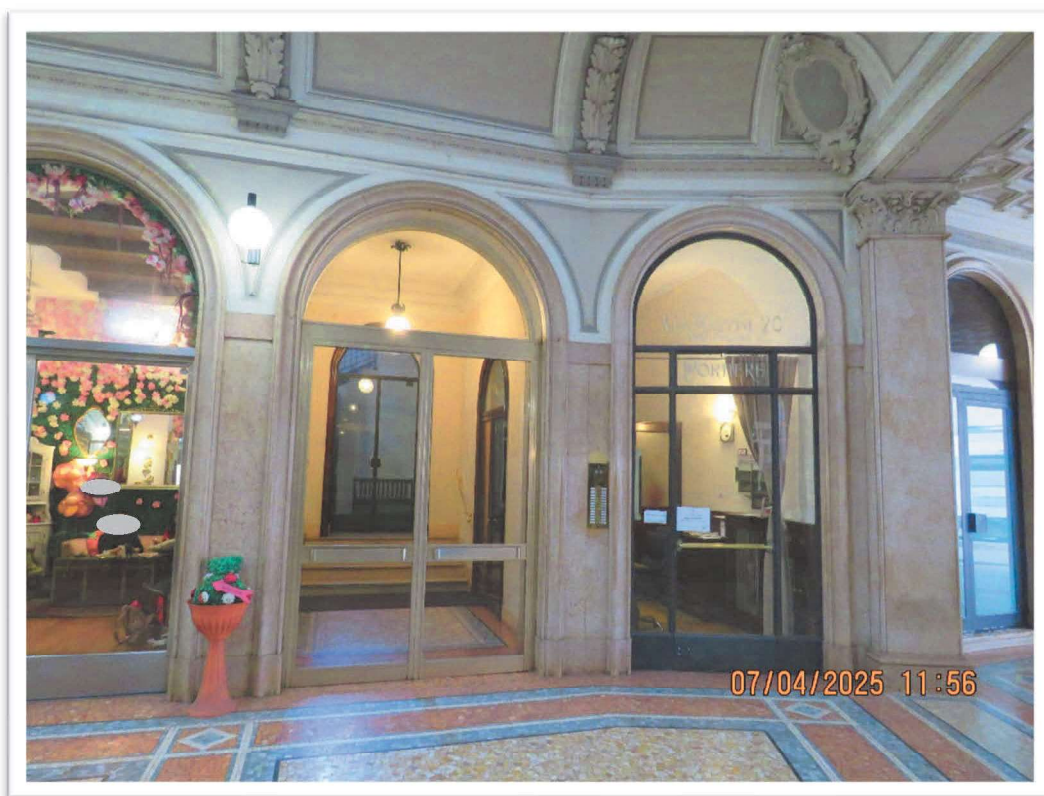




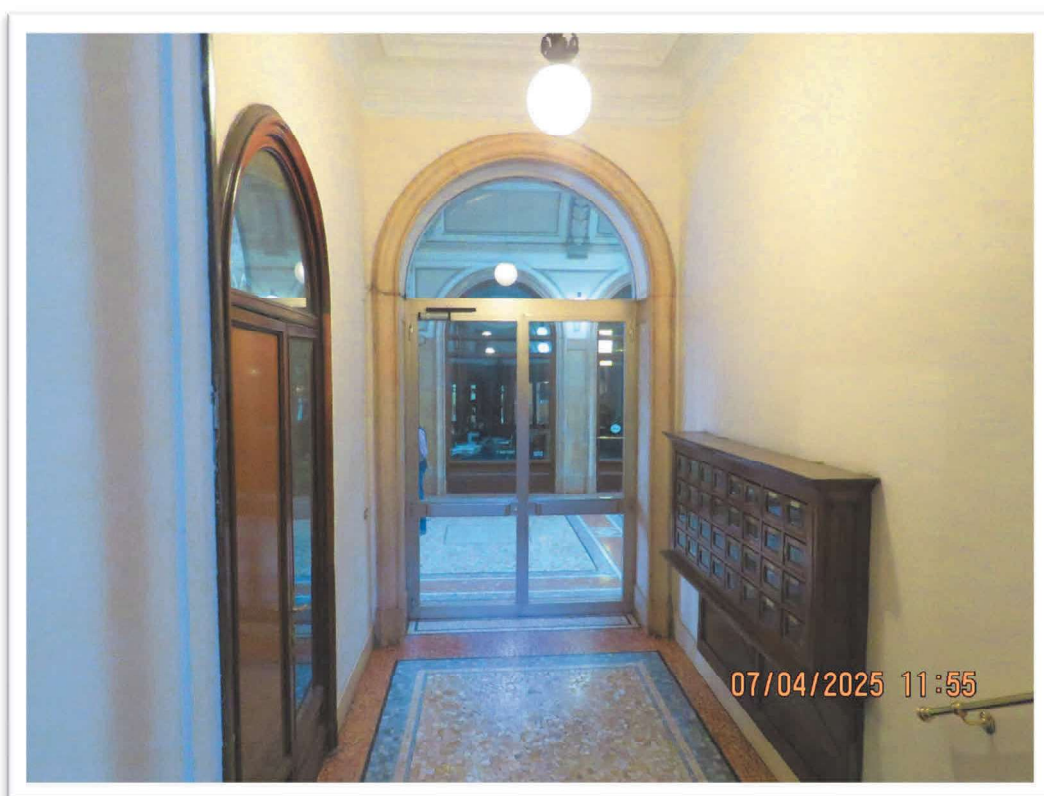


Vista della galleria da cui si accede all'interno del Condominio.

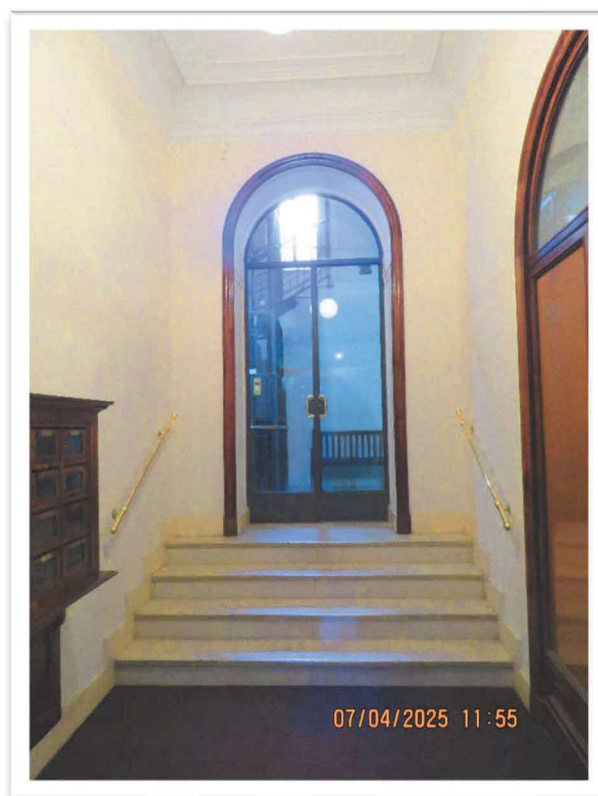




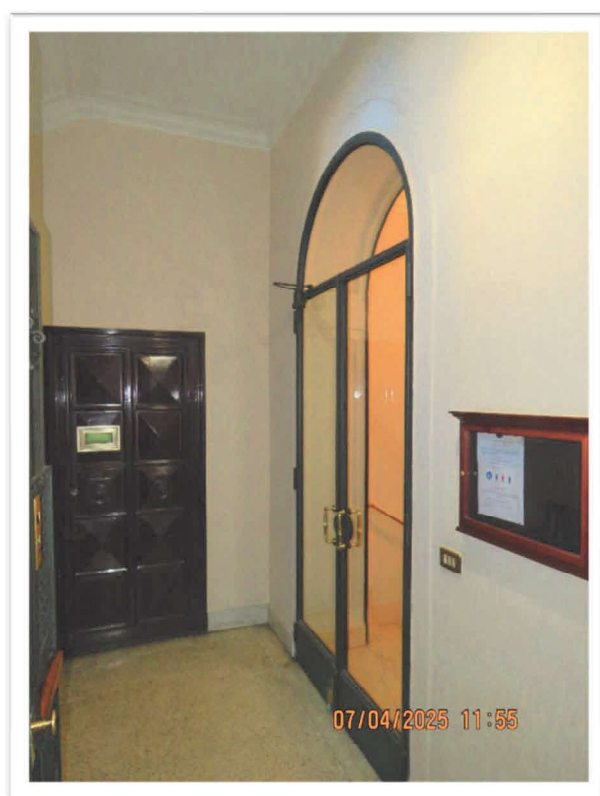
Particolare dell'ingresso al vano scale condominiale.





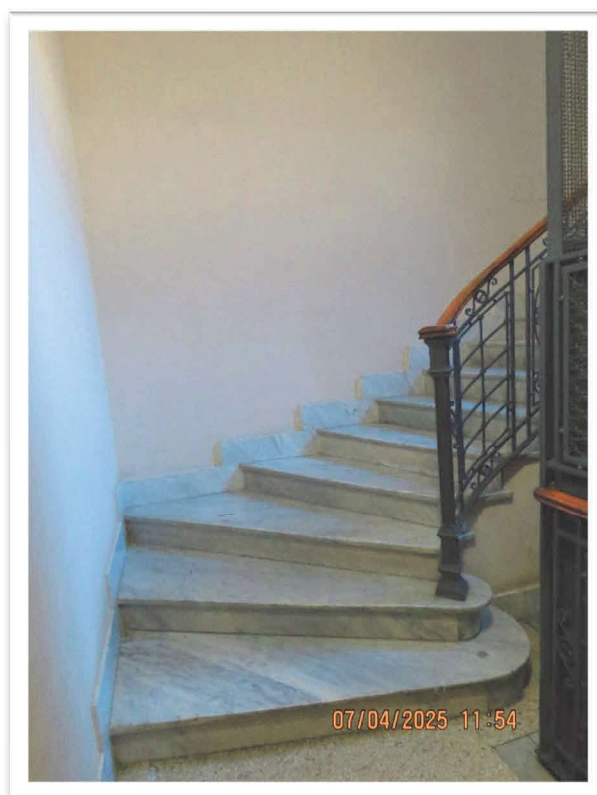


Particolari dell'ingresso condominiale.

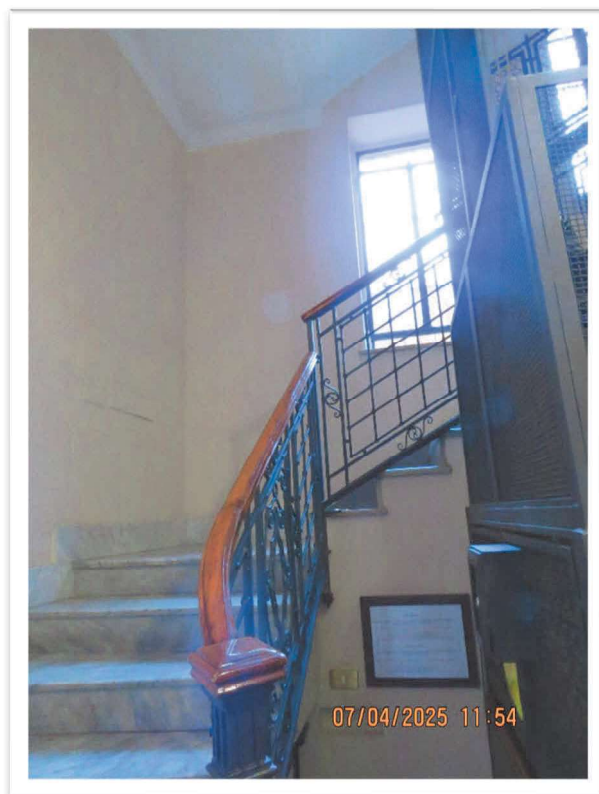




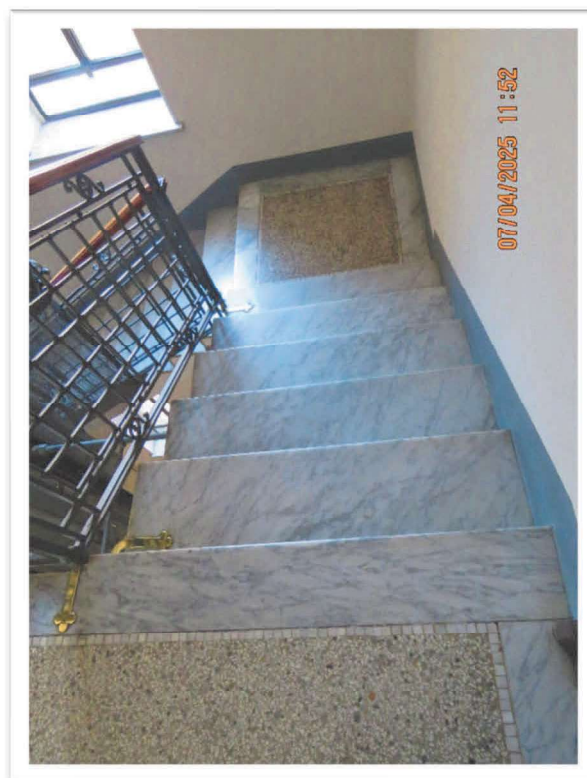
Ascensore e vano scale.

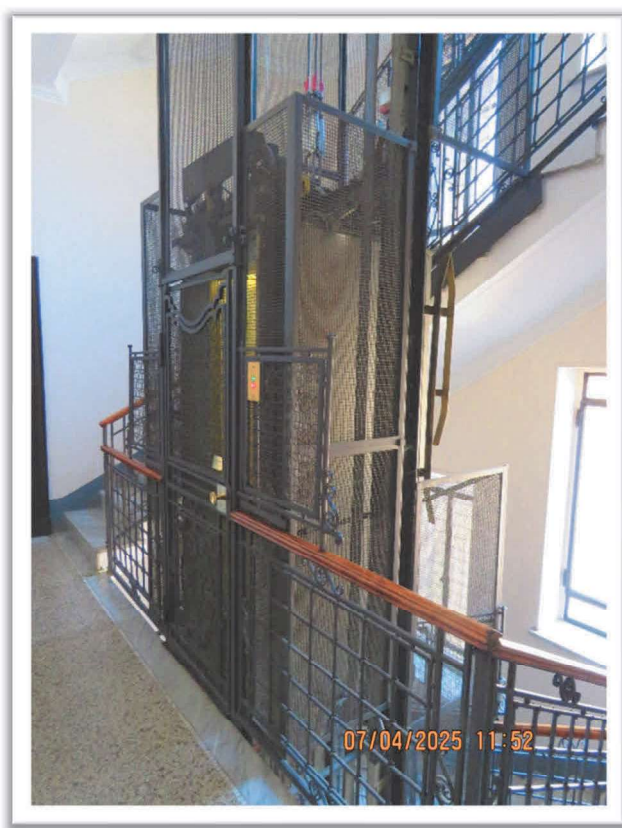




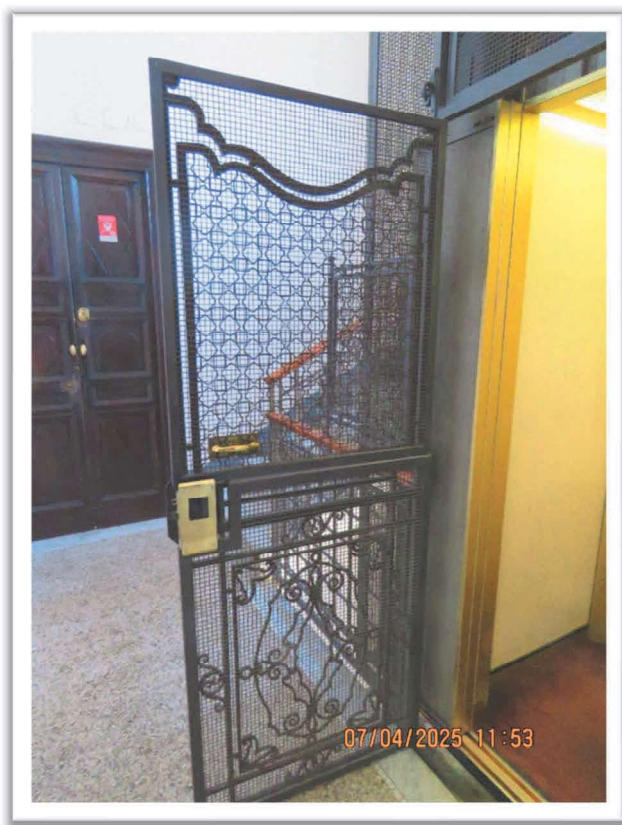


Particolari del vano scale.

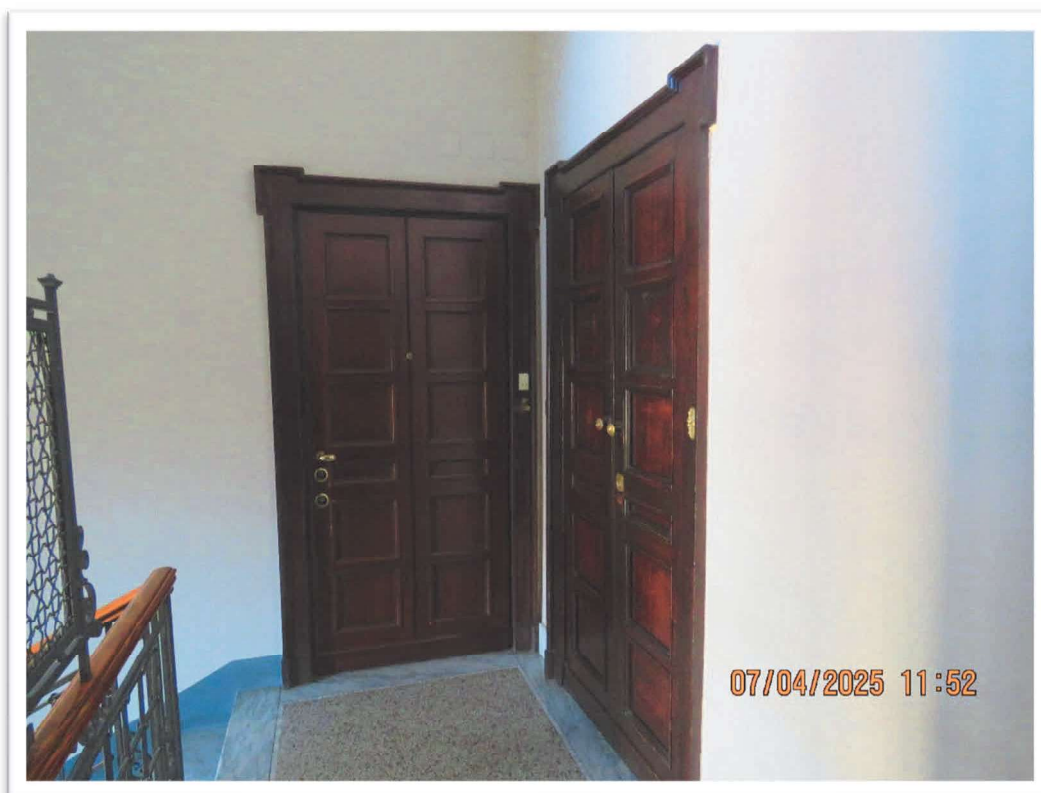




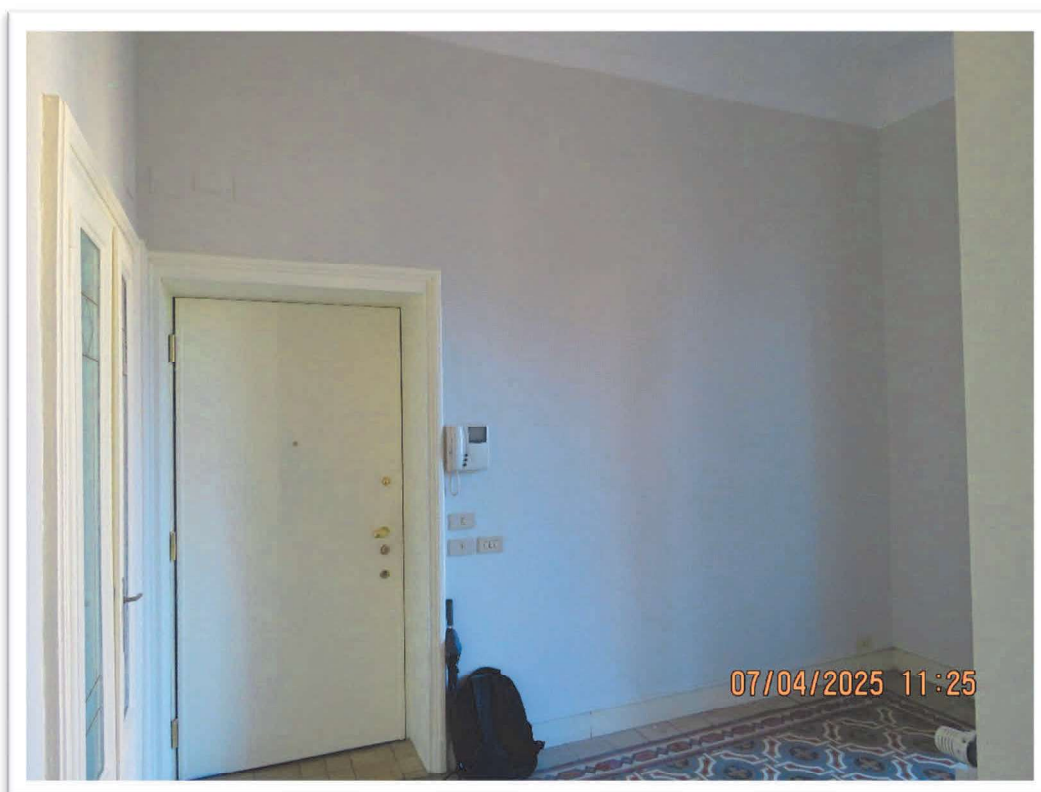
Viste dell'ascensore al piano 4°.







Viste esterna ed interna dell'ingresso dell'alloggio al piano 4° (porta in fronte).





Particolari della zona d'ingresso.

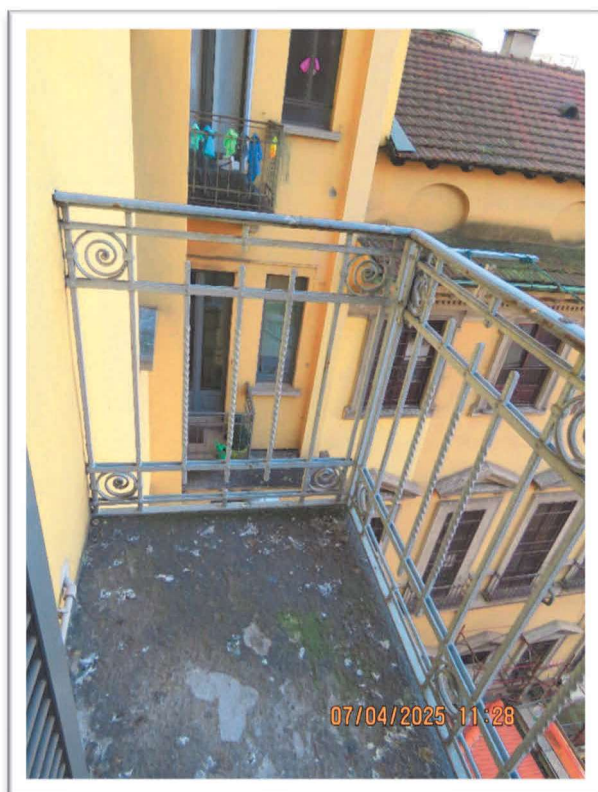




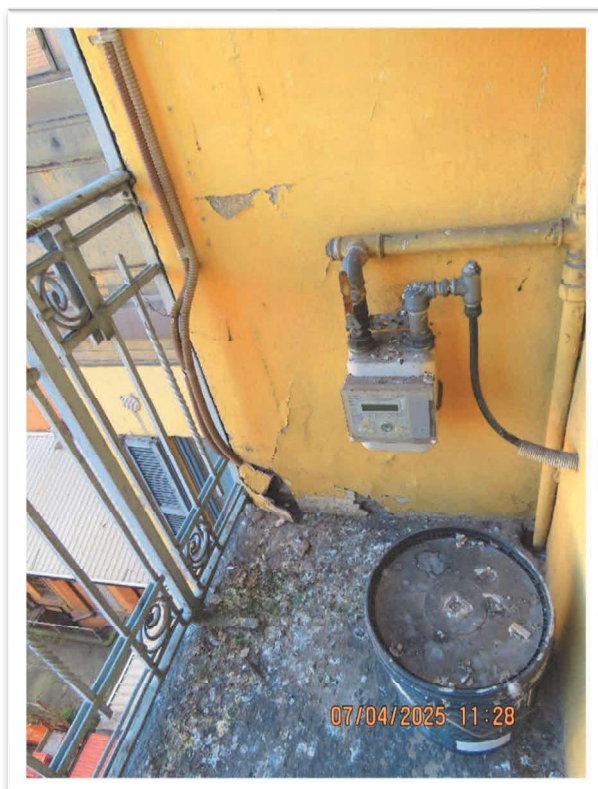


Particolari.

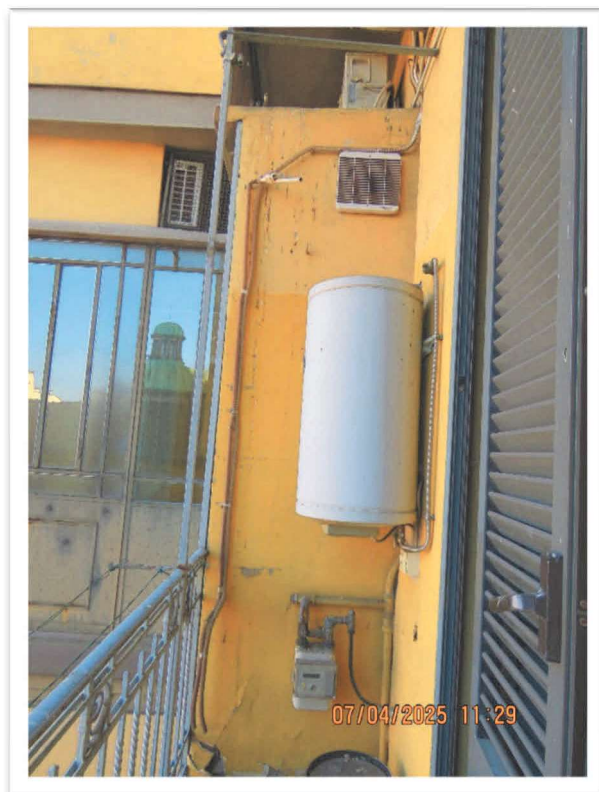




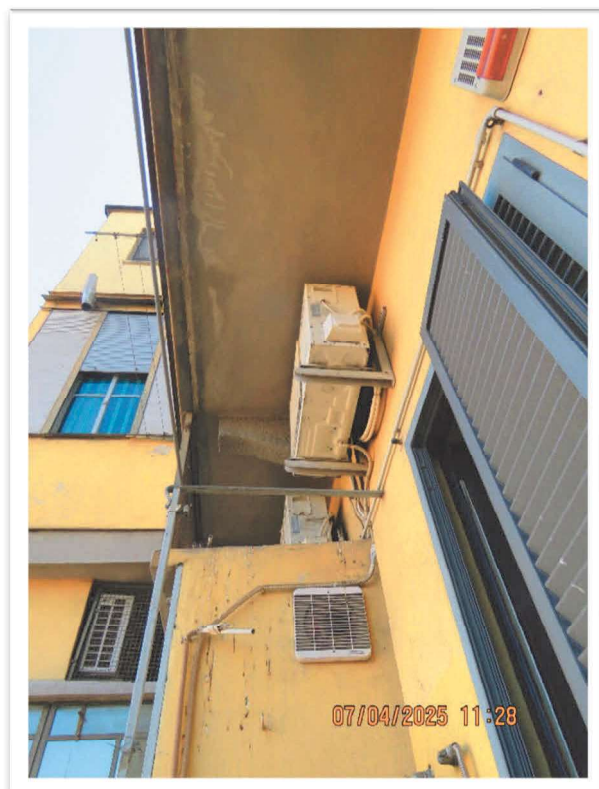
Il balconcino con accesso dall'ingresso.





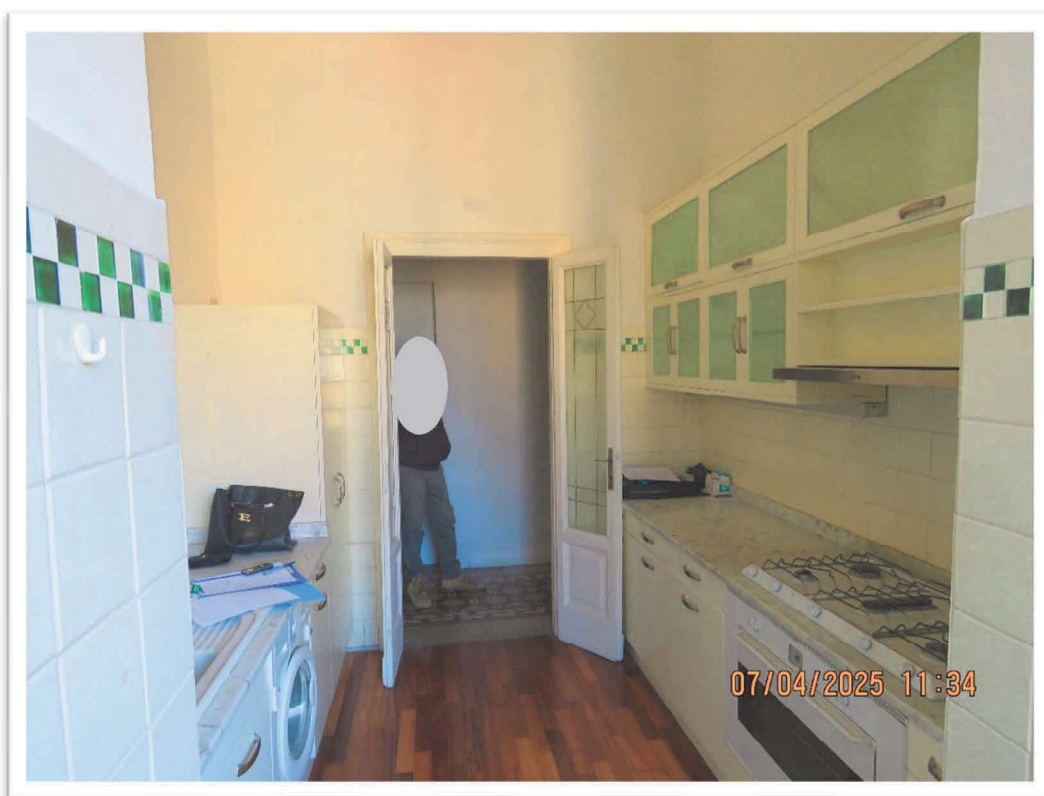


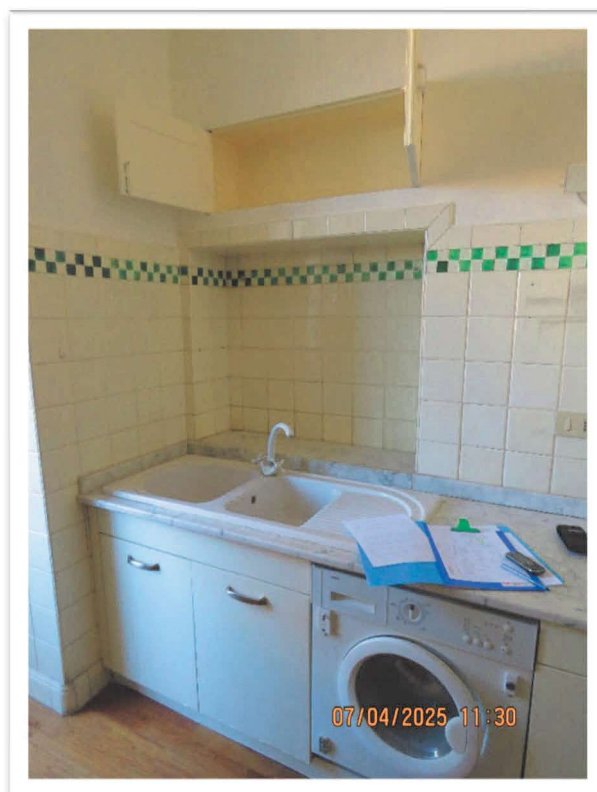
Particolari del balconcino con accesso dall'ingresso.





La cucina.

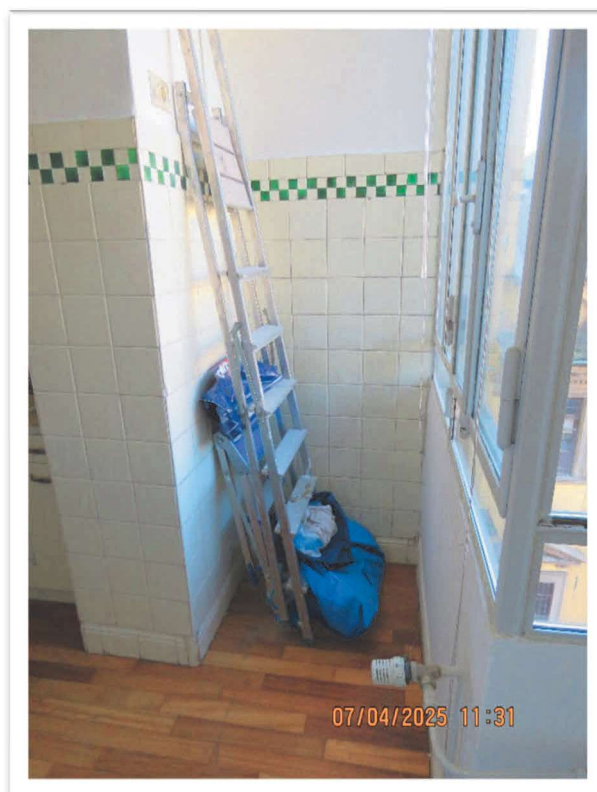




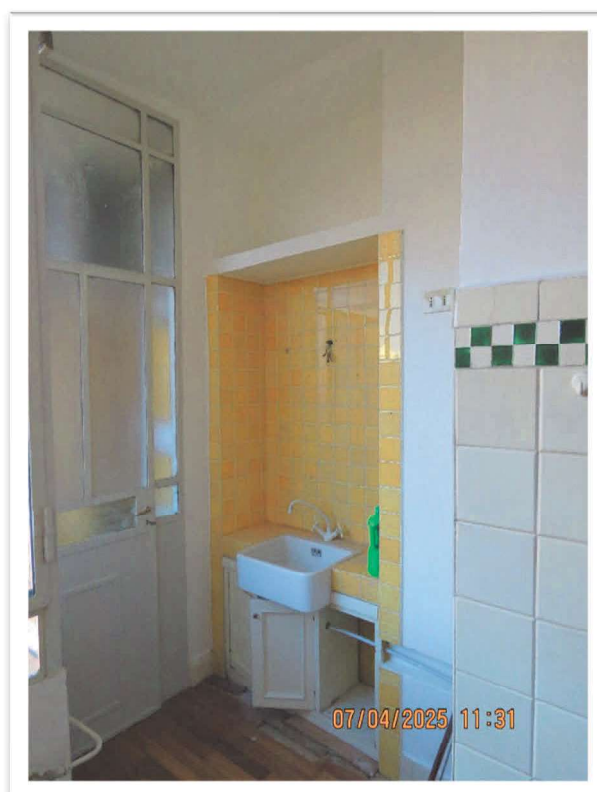
Particolari.

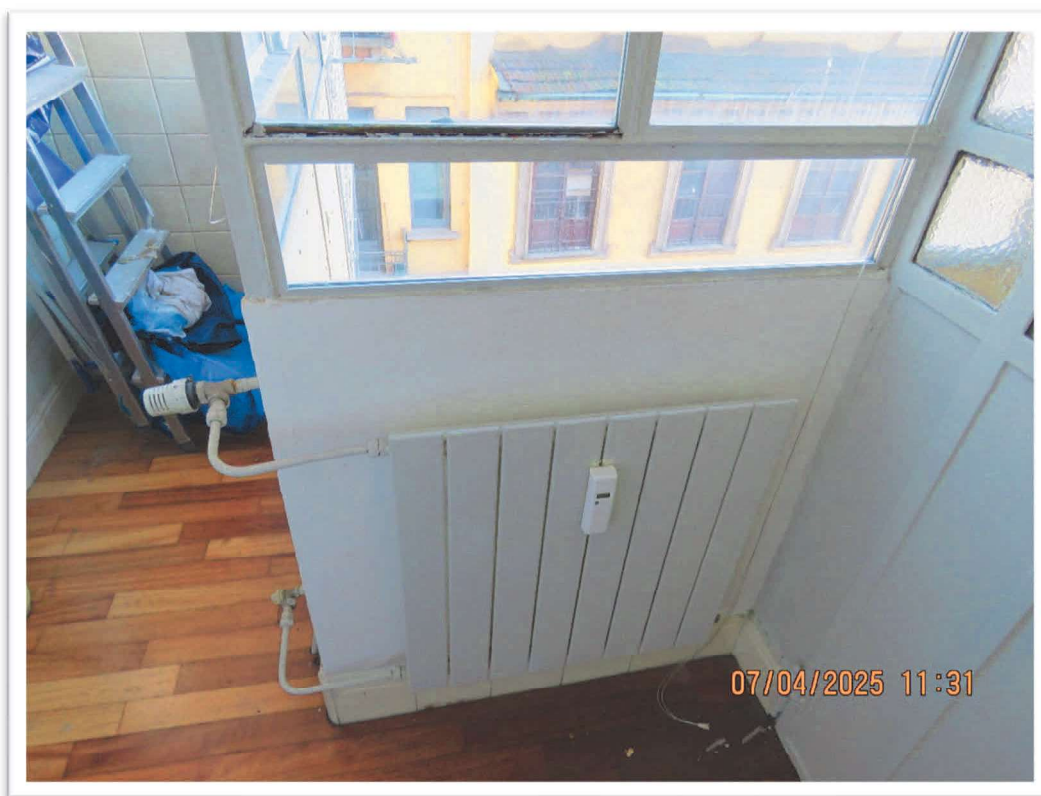




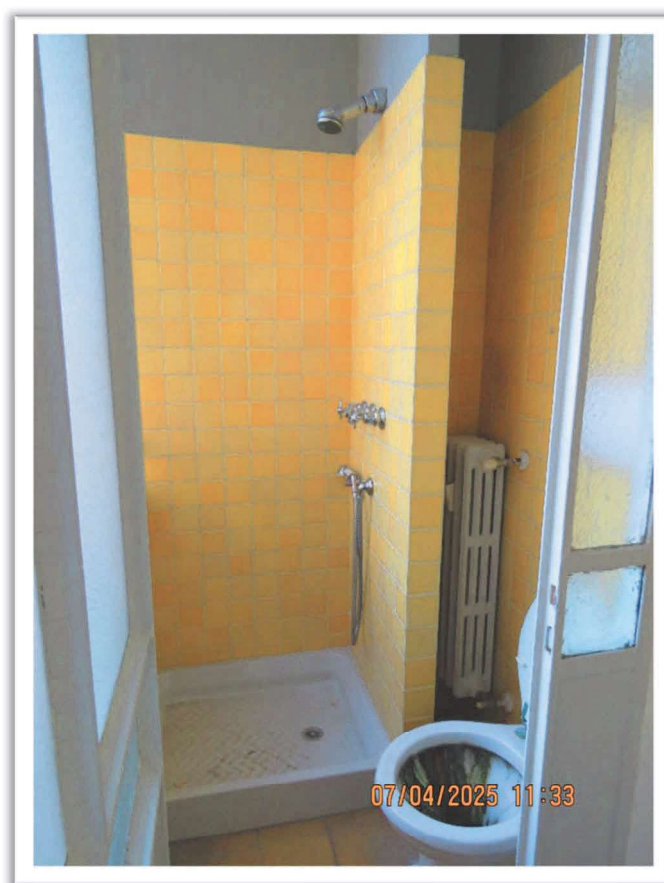


Particolari della zona verandata della cucina.



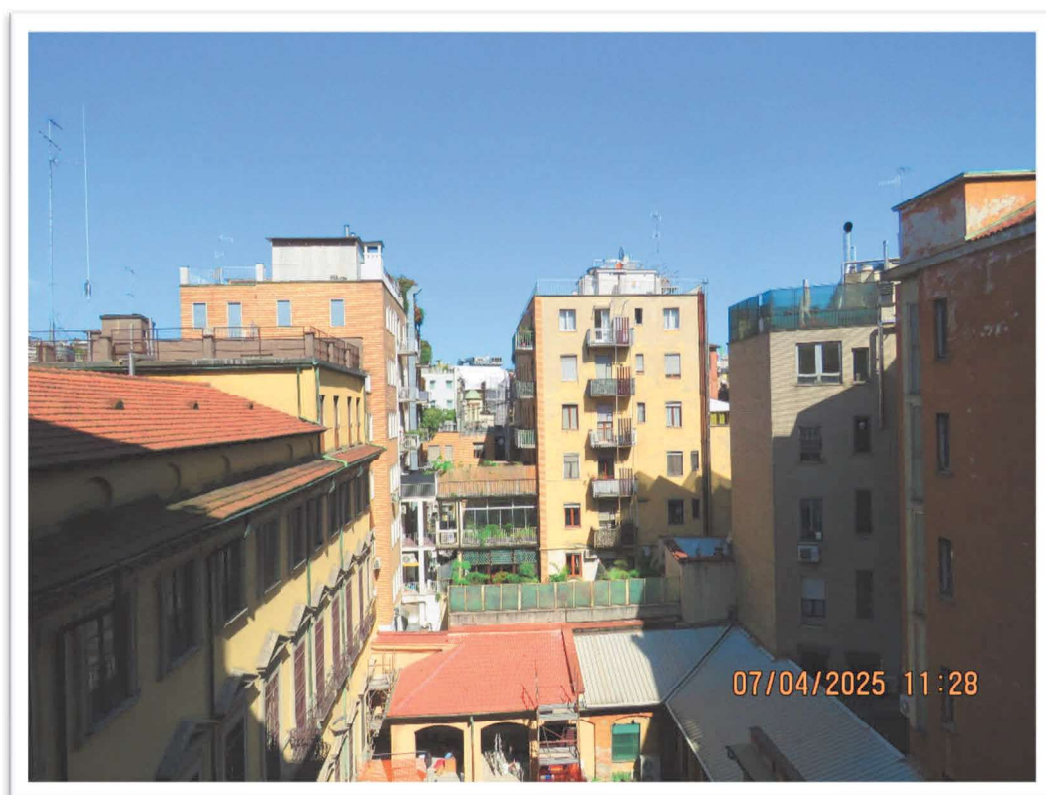


Particolari della zona verandata della cucina e del bagno ricavato in parte di essa.

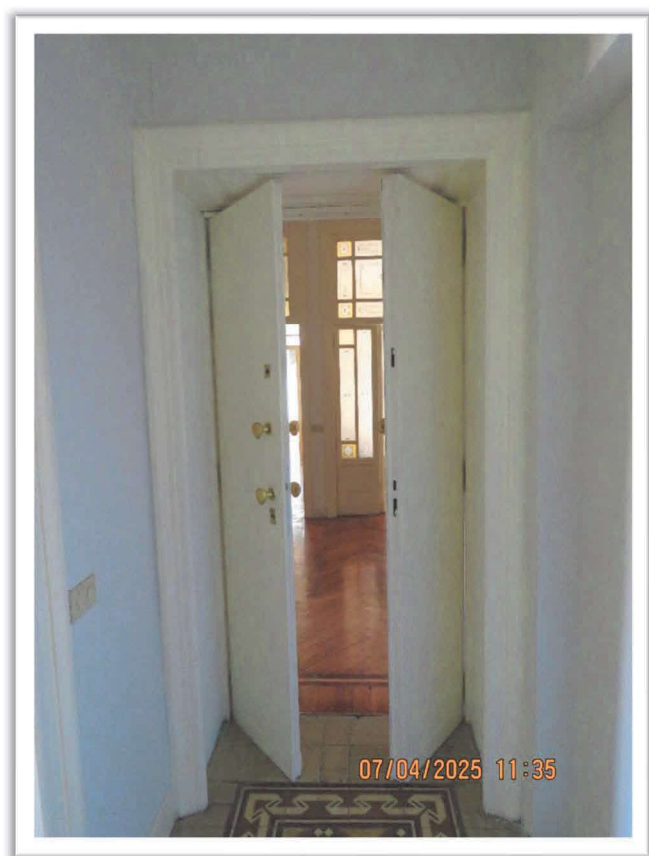




Vista esterna della veranda e dal balconcino d'ingresso.







Viste del disimpegno.



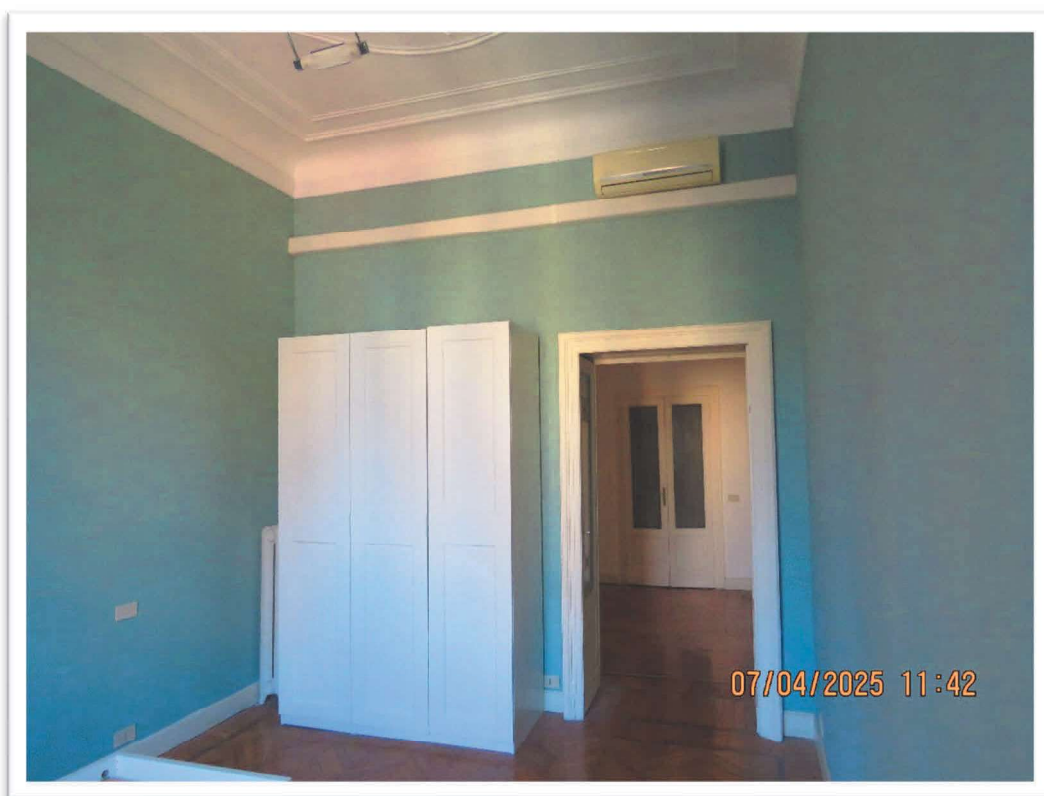


Viste del disimpegno.





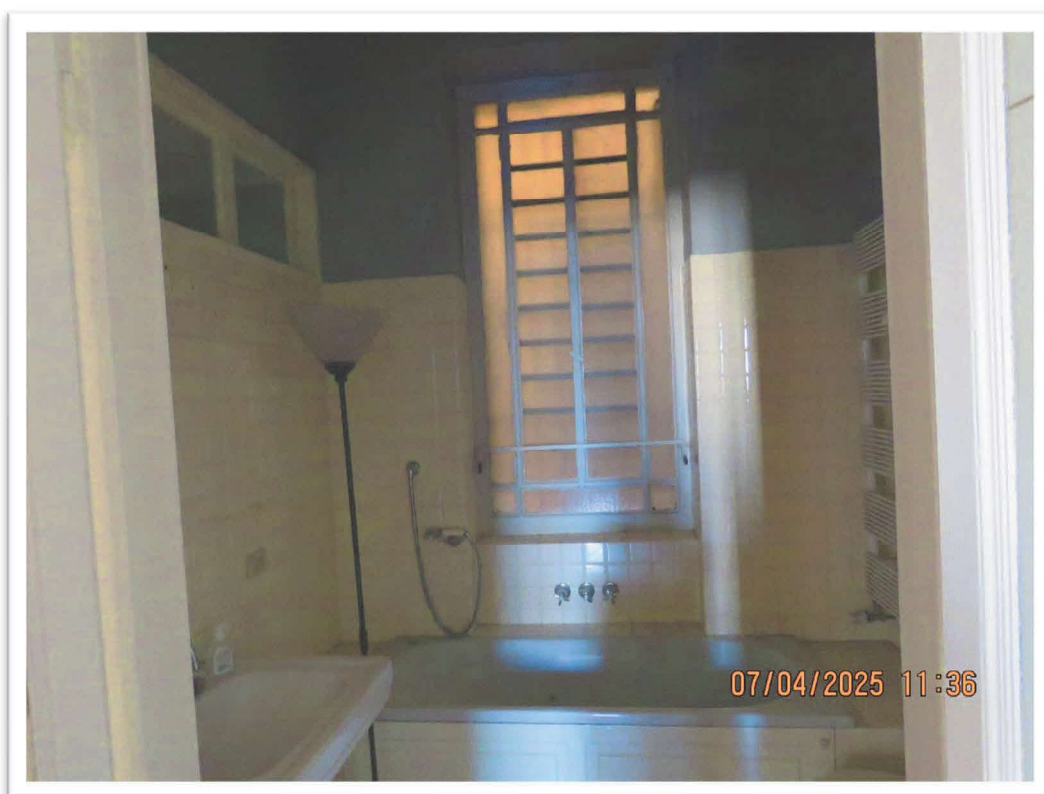
Vista di una camera.

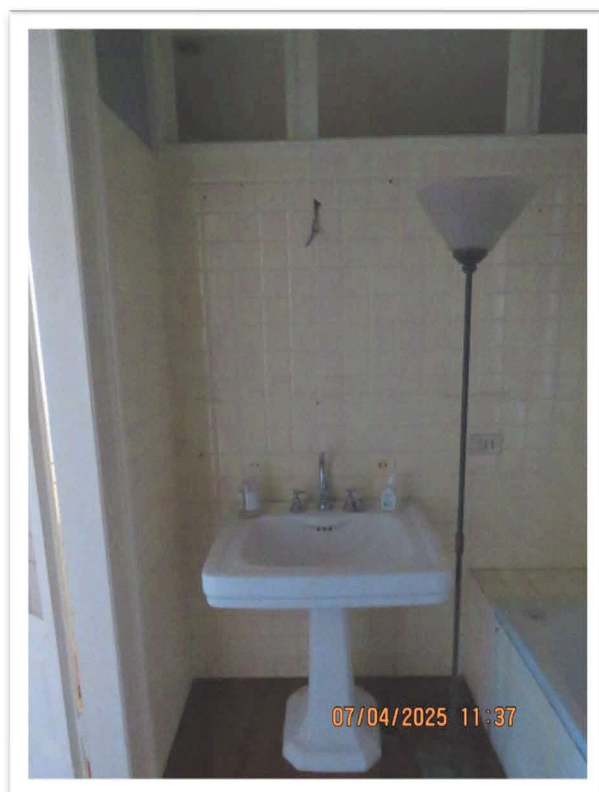




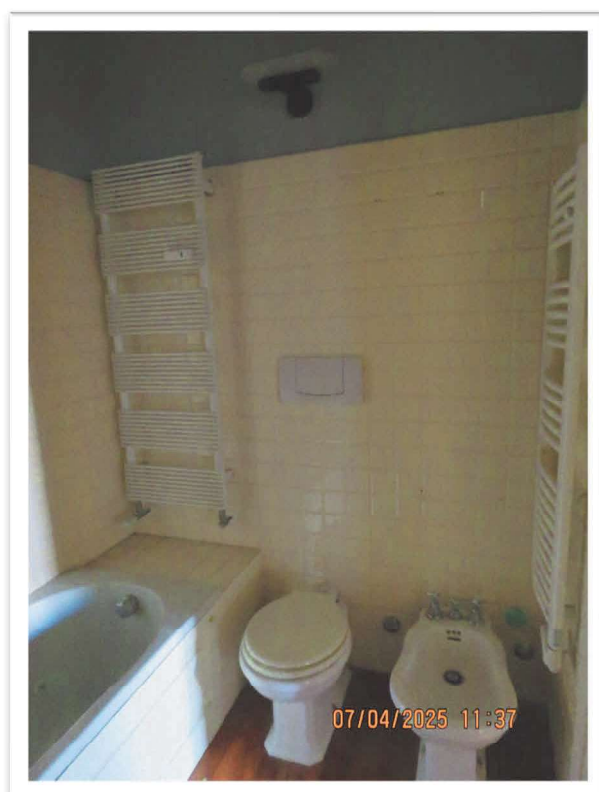


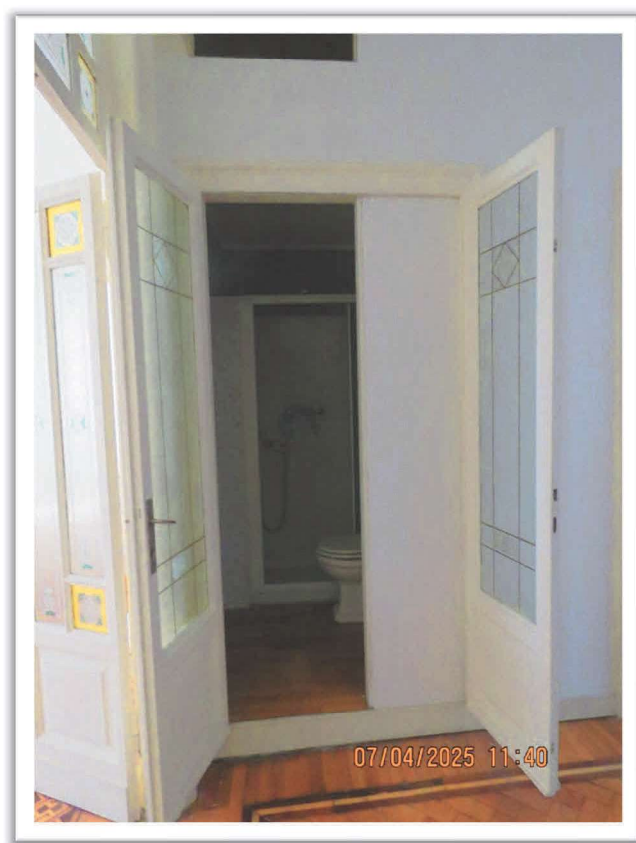
Ingresso ai bagni dal disimpegno e, sotto, il bagno principale.



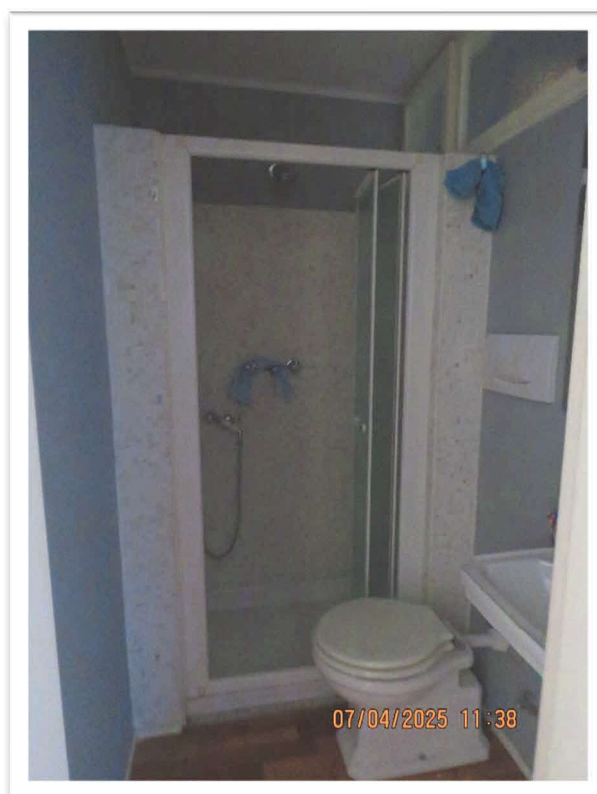


Particolari del bagno principale.

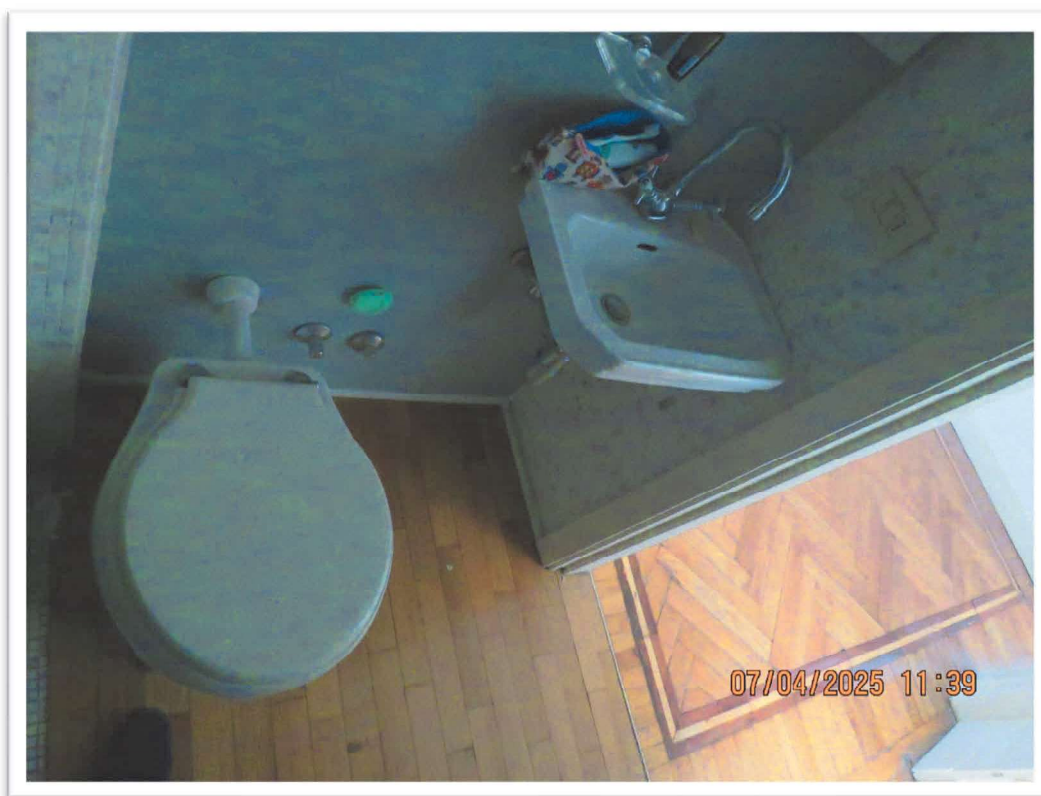




Il secondo bagno.







Particolare del bagno secondario e del portello del ripostiglio in quota.





Interno del ripostiglio in quota e, sotto, vista del secondo disimpegno.





Viste della camera principale.







Viste della sala posta verso il confine Nord.





Particolare del ripostiglio posto a confine Nord e, sotto, il serramento da cui si accede alla seconda sala.





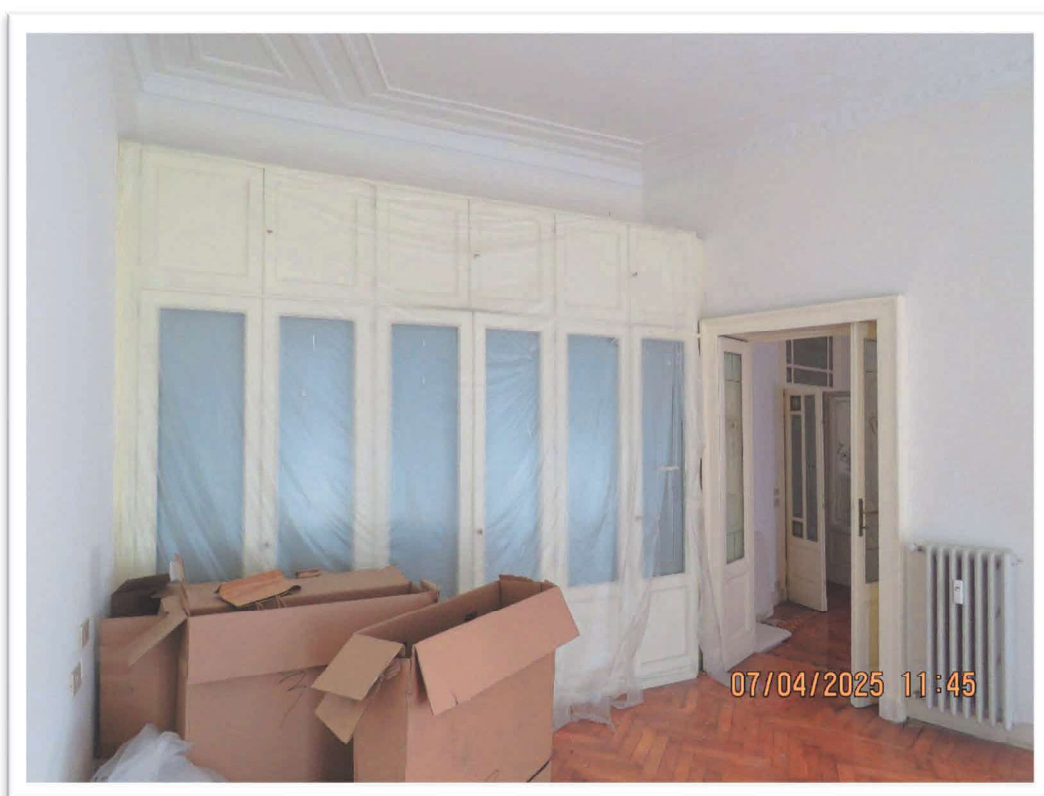
Viste della seconda sala.







L'ingresso alla terza sala.



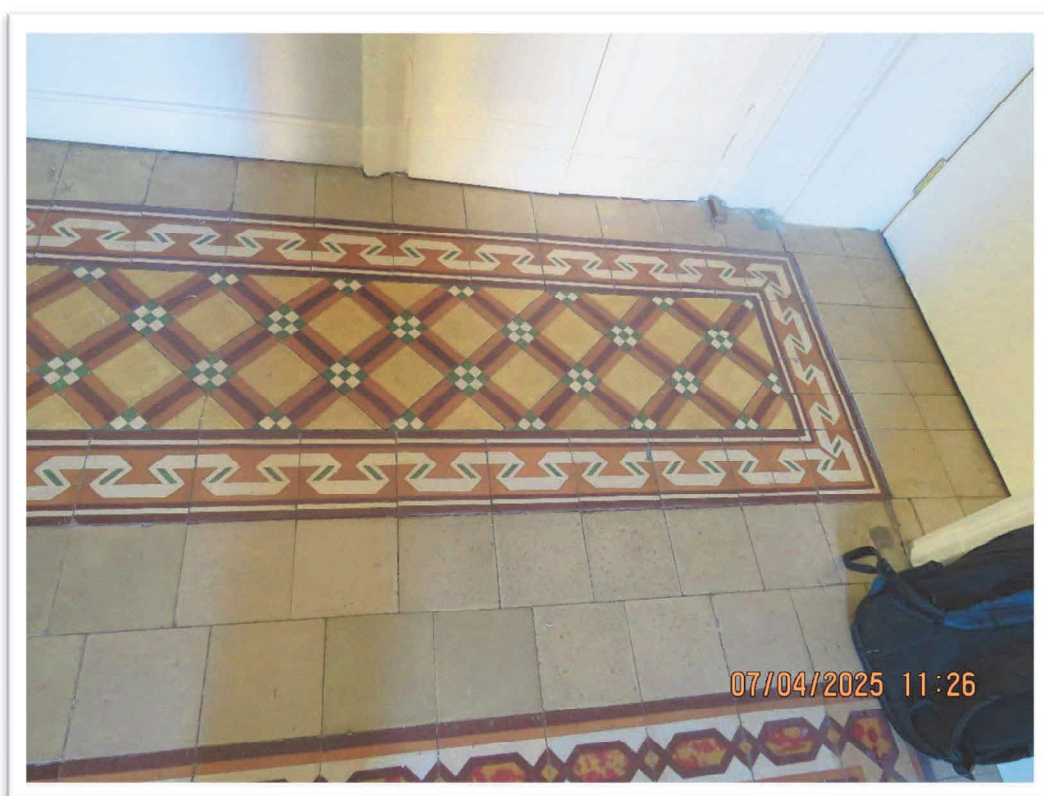


La terza sala e particolari delle finestre.

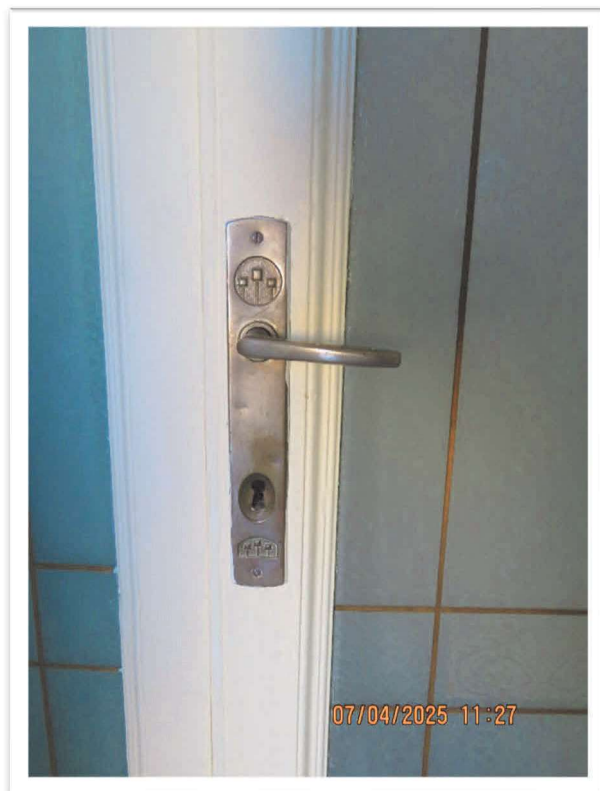




Particolari.







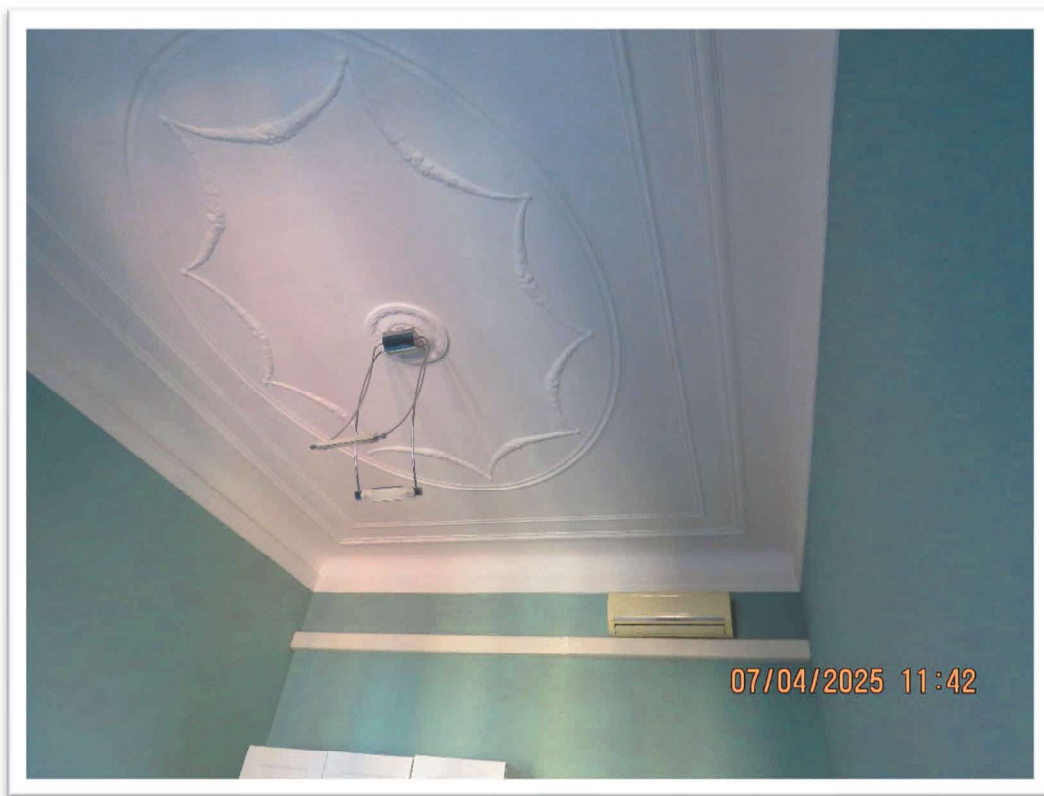
Particolari.





Particolari.





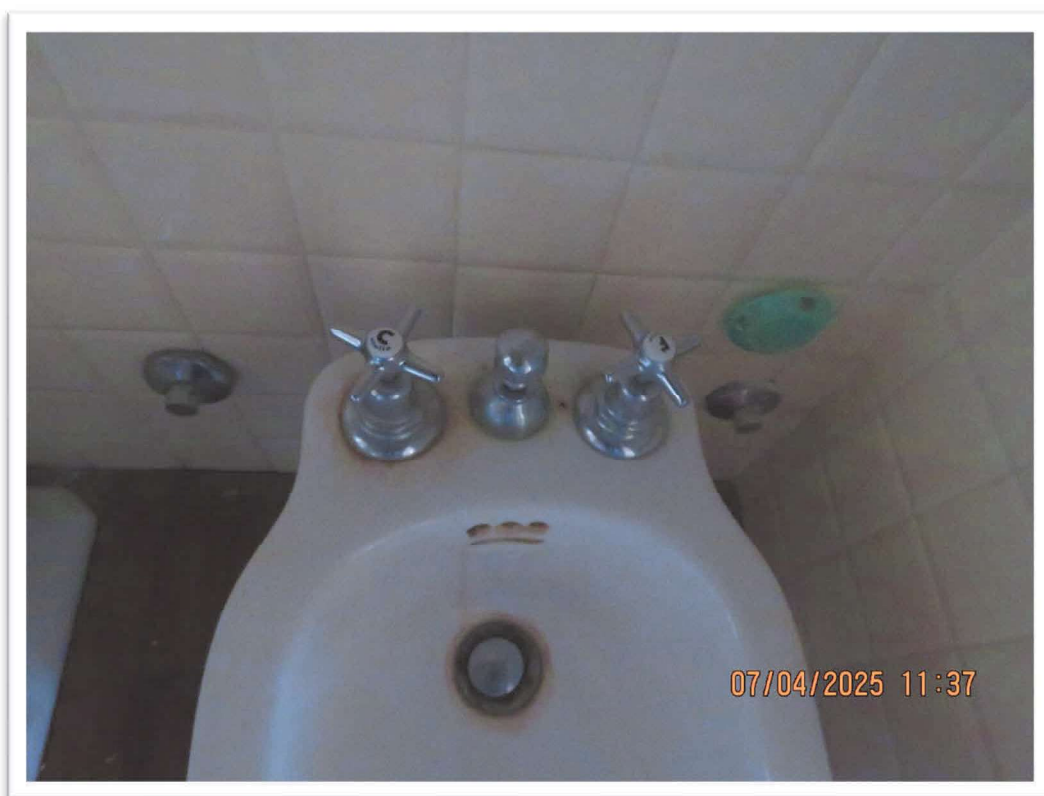
Particolari.

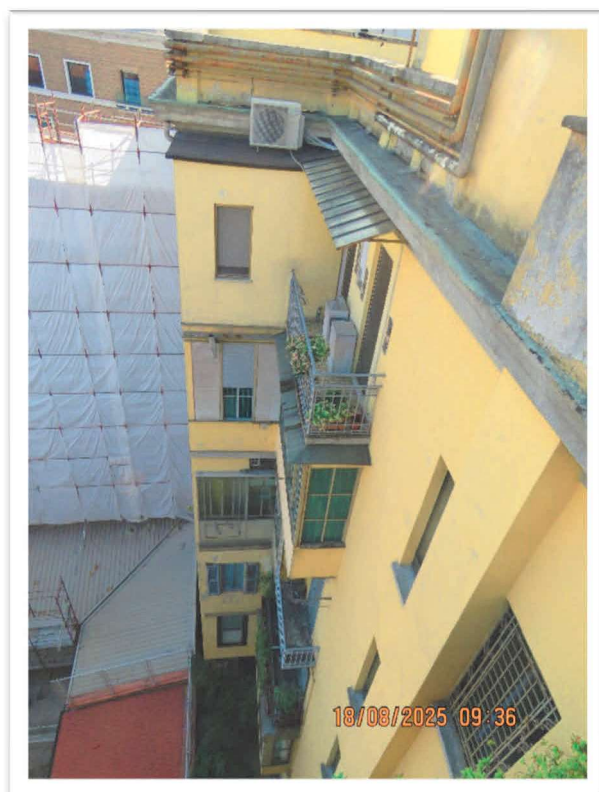






Particolari.





Particolari del confine del fabbricato in esame (tinta giallo tenue) verso la proprietà di terzi posta a Nord del lotto, in parte coperta da ponteggio e distante, parrebbe, meno di ml. 1,50.

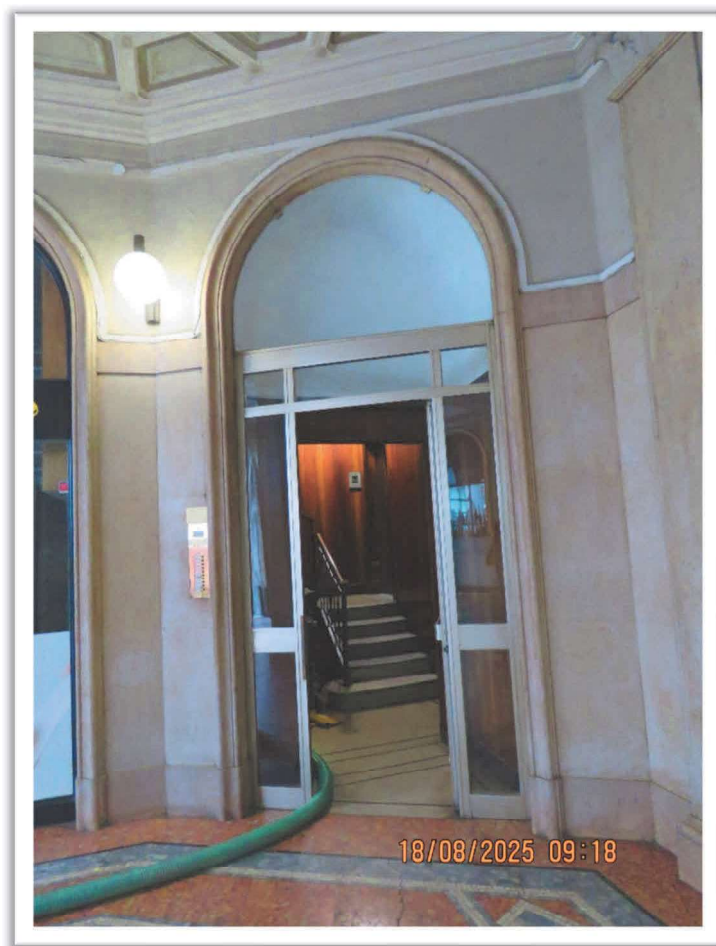






**Sopra:** vista del cortile **mappale 3** dal balcone e su cui parrebbero insistere il balcone, la veranda ed il bagno di servizio verandato dell'appartamento in esame.

**Sotto:** vista dell'accesso ad altro vano scala condominiale da cui si giunge alla cantina.







Percorso per raggiungere la cantina.





Viste esterna ed interna della cantina.





Viste del terrazzo al settimo piano e vista della **porzione di solaio in uso alla proprietà dell'appartamento in esame** secondo quanto riferito dalla persona presente al sopralluogo e secondo uno schema mostrato dal custode del Condominio.

