

all. 10

**Fotografie esterne ed interne del bene,
nonché la relativa planimetria**

Foto aerea - ubicazione dell'immobile



Foto esterne



foto facciata ang. Via
Briosi via Tallone



Foto da via Briosi

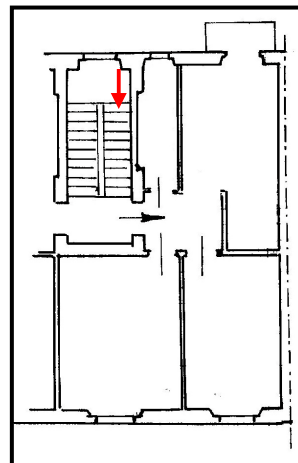
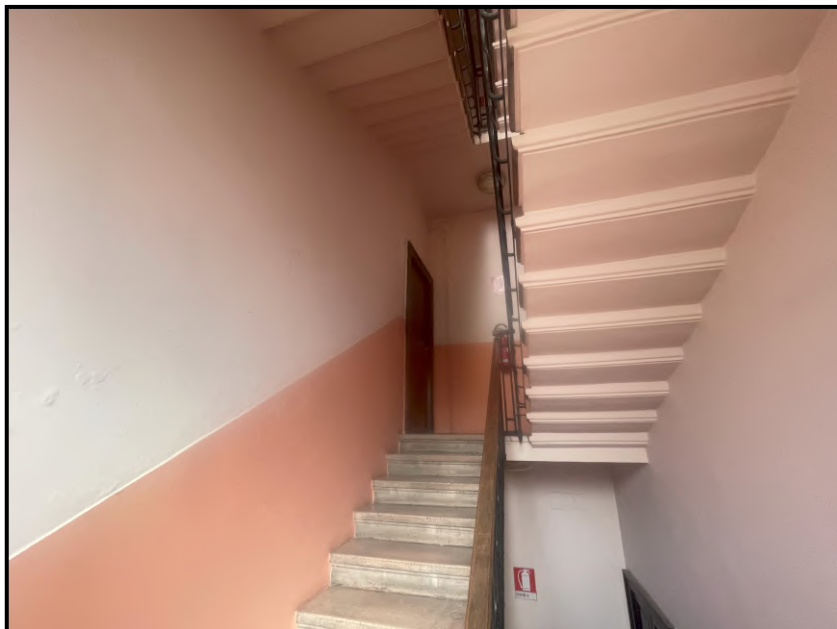


Foto facciata attuale con in corso manutenzione

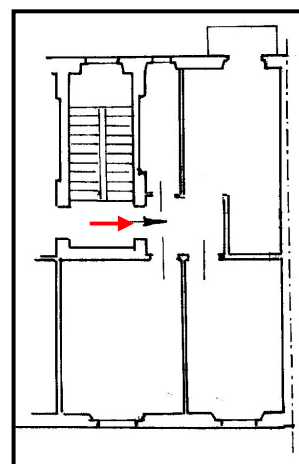


Foto da cortile interno

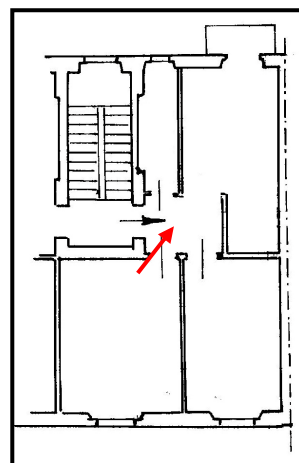
Foto interne



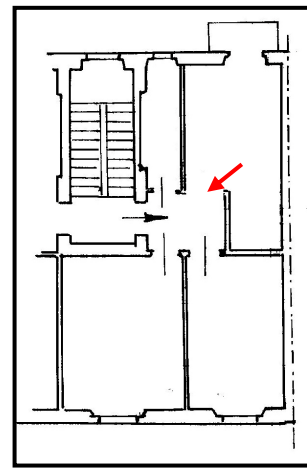
Ingresso da pianerottolo comune



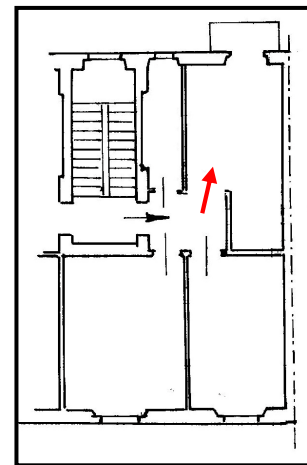
Ingresso/disimpegno



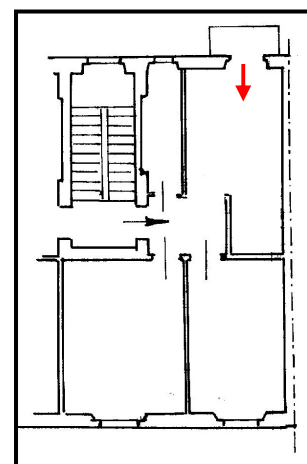
Disimpegno



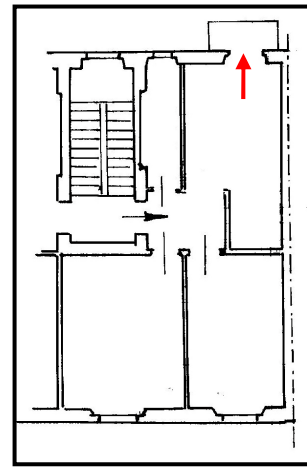
Ingresso



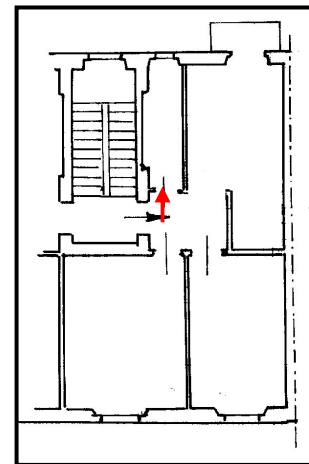
Soggiorno-cucina



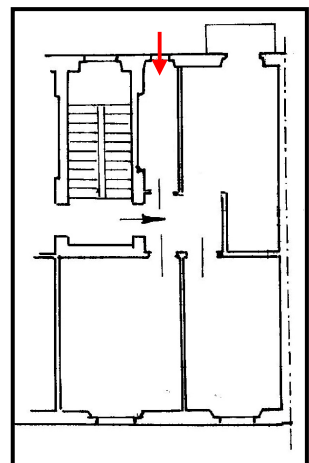
Soggiorno-cucina



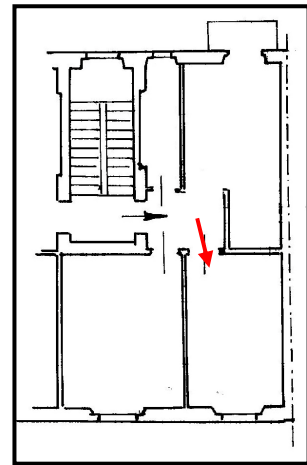
Balcone



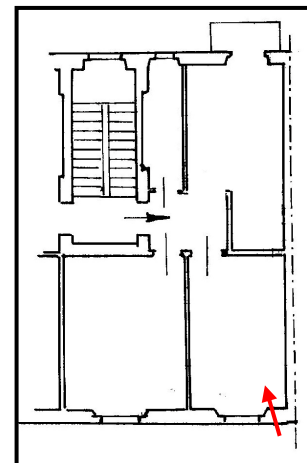
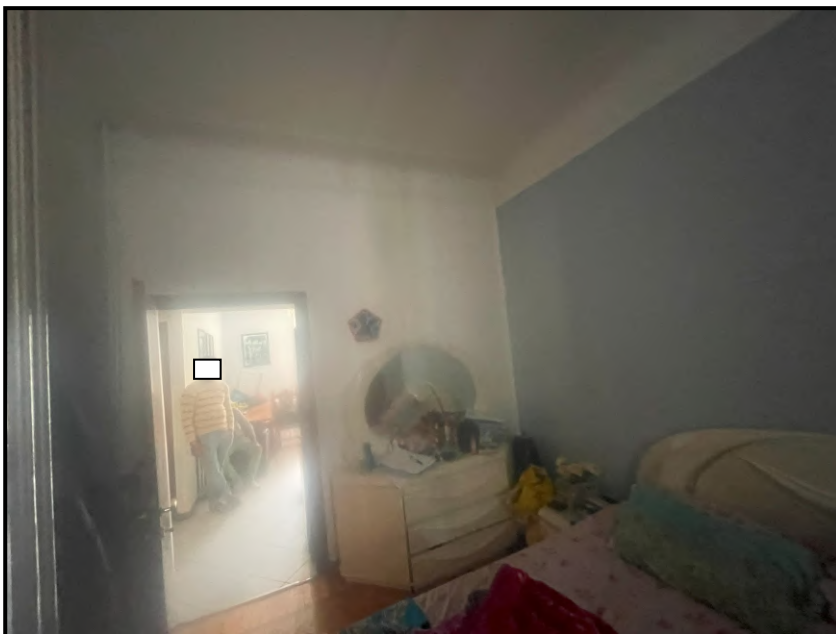
Bagno



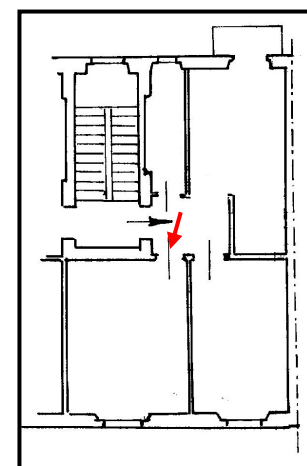
Bagno



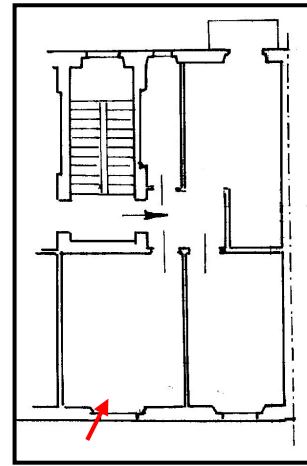
Camera 1



Camera 1



Camera 2



Camera 2